



Association of Weight Loss Between Early Adulthood and Midlife With All-Cause Mortality Risk in the US

Wubin Xie, DrPH; Dielle J. Lundberg, MPH; Jason M. Collins, MPH; Stephen S. Johnston, PhD; Jason R. Waggoner, PhD; Chia-Wen Hsiao, MHS; Samuel H. Preston, PhD; JoAnn E. Manson, MD, DrPH; Andrew C. Stokes, PhD

Abstract

IMPORTANCE Describing potential mortality risk reduction associated with weight loss between early adulthood and midlife is important for informing primary and secondary prevention efforts for obesity.

OBJECTIVE To examine the risk of all-cause mortality among adults who lost weight between early adulthood and midlife compared with adults who were persistently obese over the same period.

DESIGN, SETTING, AND PARTICIPANTS Combined repeated cross-sectional analysis was conducted using data from the National Health and Nutrition Examination Survey III (1988-1994) and continuous waves collected in 2-year cycles between 1999 and 2014. The data analysis was conducted from February 10, 2019, to April 20, 2020. Individuals aged 40 to 74 years at the time of survey (baseline) were included in the analyses (n = 24 205).

EXPOSURES Weight history was assessed by self-reported weight at age 25 years, at 10 years before baseline (midlife: mean age, 44 years; interquartile range, 37-55), and measured weight at baseline. Body mass index (BMI) (calculated as weight in kilograms divided by height in meters squared) at each time was categorized as normal (18.5-24.9), overweight (25.0-29.9), and obese (≥ 30.0). Weight change patterns were assessed from age 25 years (early adulthood) to 10 years before baseline (midlife).

MAIN OUTCOMES AND MEASURES Incident all-cause mortality using linked data from the National Death Index.

RESULTS Of the 24 205 participants, 11 617 were women (49.0%) and 11 567 were non-Hispanic White (76.9%). The mean (SD) BMI was 29.0 (6.1) at baseline. During a mean (SD) follow-up of 10.7 (7.2) years, 5846 deaths occurred. Weight loss from obese to overweight was associated with a 54% (hazard ratio, 0.46; 95% CI, 0.27-0.77) reduction in mortality risk compared with individuals with stable obesity between early adulthood and midlife. An estimated 3.2% (95% CI, 1.6%-4.9%) of early deaths could have been avoided if those who maintained an obese BMI instead lost weight to an overweight BMI by midlife. Overall, an estimated 12.4% (95% CI, 8.1%-16.5%) of early deaths may be attributable to having weight in excess of the normal BMI range at any point between early and mid-adulthood.

CONCLUSIONS AND RELEVANCE In this study, weight loss from obesity to overweight between early adulthood through midlife appeared to be associated with a mortality risk reduction compared with persistent obesity. These findings support the importance of population-based approaches to

(continued)

Key Points

Question Is weight loss between early adulthood and midlife associated with reduced mortality risk later in life compared with persistent obesity?

Findings In this combined, repeated cross-sectional analysis of a nationally representative cohort of 24 205 US adults followed up for a mean of 10.7 years, participants who lost weight from an obese body mass index in early adulthood to overweight in midlife had a 54% reduction in mortality risk relative to those who maintained an obese body mass index. An estimated 3.2% of early deaths could have been avoided if those who maintained an obese BMI instead lost weight to an overweight BMI by midlife.

Meaning Findings from this study suggest that population-based approaches to preventing weight gain and treating obesity early in life may have important mortality reduction benefits.

+ Supplemental content

Author affiliations and article information are listed at the end of this article.

Abstract (continued)

preventing weight gain across the life course and a need for greater emphasis on treating obesity early in life.

JAMA Network Open. 2020;3(8):e2013448. doi:10.1001/jamanetworkopen.2020.13448

Introduction

The prevalence of obesity has increased rapidly in the US and globally over the past several decades.^{1,2} In addition to this general trend, recent birth cohorts in the US are reaching a higher prevalence of obesity earlier in the life course.³ As a result, younger generations are experiencing a greater cumulative exposure to excess adiposity during their lifetime. Relying on a snapshot of obesity status assessed at one specific time in the life course, previous studies have generally found a U-shaped or J-shaped association between body mass index (BMI) and mortality.⁴⁻⁸ However, by including only a single measurement of BMI, these studies do not acknowledge the dynamic aspect of weight progression over time and are subject to measurement errors related to individual differences in body frame size and lean mass.⁹

Studies that consider weight progression across adulthood in association with mortality have found that weight gain from early adulthood to midlife is associated with increased risk.⁹⁻¹² A study by Chen et al¹² using data from the National Health and Nutrition Examination Survey (NHANES) reported that weight gain in adulthood significantly increased all-cause mortality risk. While Chen et al¹² provided evidence on the mortality risk of weight change compared with stable normal weight, they did not estimate the potential mortality risk reductions associated with weight loss among adults with obesity. Few other studies have investigated the association of weight loss with mortality, and the results are inconsistent.¹³⁻¹⁷ Specifically, it remains unclear whether people with measures of BMI above normal in early adulthood who later lose weight reduce their mortality risk or whether there is residual risk due to irreversible pathologic processes resulting from carrying excess weight earlier in life.

Estimating the population consequences of elevated BMI is complicated by the complex interactions of BMI with age, smoking, and other risk factors and the lack of understanding of healthy weight trajectories over the life course.¹⁸ As a result, the proportion of total deaths that are attributable to obesity reported by previous studies varies widely.^{6,19} Additional empirical estimates derived from nationally representative data sources are needed to assess the population-level effects of obesity prevention and treatment on mortality risk reduction across the life course.

Using data from the NHANES, the present study evaluates the all-cause mortality risk associated with patterns of BMI change between early adulthood and midlife. We tested whether individuals who were overweight or obese in early adulthood but lost weight to lower BMI levels by midlife were at reduced risk of mortality compared with individuals who maintained a stable overweight or obese BMI (the risk reduction hypothesis) and at an increased risk of mortality compared with individuals who remained at lower BMI levels over the same time (the residual risk hypothesis). We also estimated the implications for overall US mortality based on population counterfactuals for primary and secondary obesity prevention across the life course.

Methods

The NHANES consists of a series of cross-sectional, nationally representative surveys of civilian, noninstitutionalized US adults. Using a complex, stratified, multistage probability cluster sampling design, NHANES data were collected periodically before 1999 and continuously thereafter in 2-year cycles. Interviews were conducted in respondents' homes, and laboratory and health measurements were performed by trained technicians in mobile examination centers. Written informed consent

was obtained from all NHANES participants. The present investigation relied on deidentified publicly available data and was therefore exempted from review by the Boston University Medical Center Institutional Review Board. This study followed the Strengthening the Reporting of Observational Studies in Epidemiology (STROBE) reporting guideline.

We incorporated data on adult participants aged 40 to 74 years at the time of survey (baseline) from both the NHANES III (1988-1994) and continuous NHANES (1999-2014). Data analysis was conducted from February 10, 2019, to April 20, 2020. We included individuals with complete data on vital status, self-reported weight at age 25 years and 10 years before baseline, measured weight at baseline, and relevant covariates ($n = 24\,205$). Participants with unreliable BMI self-reports, defined as a discrepancy between measured and self-reported BMI at baseline outside the first to 99th percentile range, were excluded. The procedure to obtain the analytic sample is depicted in eFigure 1 in the [Supplement](#).

Vital status was obtained from the NHANES Linked Mortality File, in which eligible participants were matched to the National Death Index through December 31, 2015. A description of the methods has been published elsewhere.²⁰ We calculated the follow-up time for each individual from the time of baseline to the date of death or censoring at the last date at which vital status was ascertained.

Weight Change Measures and Covariates

Participants were asked to recall weight at age 25 years (early adulthood) and weight 10 years before their age at baseline (midlife). Baseline weight and height were measured at the time of the medical examination. To calculate BMI, we used measured height at baseline for participants younger than 50 years and recalled height at age 25 years for participants aged 50 years and older. Recalled height at age 25 years was not recorded in the NHANES III; thus, the use of recalled height was limited to respondents from 1999 to 2014 who were older than 50 years.

Body mass index was calculated as weight in kilograms divided by height in meters squared. The BMI values at each time were categorized as normal weight (18.5-24.9), overweight (25.0-29.9), and obese (≥ 30.0), consistent with established definitions.²¹ We examined weight change patterns from age 25 years (early adulthood) to 10 years before baseline (midlife; mean age, 44 years; interquartile range, 37-55). For each time interval, 9 weight change patterns were created in 3 broad categories: (1) weight maintenance (normal-normal, overweight-overweight, obese-obese), (2) weight gain (normal-overweight, normal-obese, overweight-obese), and (3) weight loss (overweight-normal, obese-normal, obese-overweight) as described in eTable 1 in the [Supplement](#).

Potential confounders included age, sex, race/ethnicity, educational level, country of birth, smoking status, and survey year. We used a parsimonious set of covariates to avoid overadjustment for potential intermediates, such as leisure time, physical activity level, and self-reported health status at baseline.

Statistical Analysis

Survival Analysis

Cox proportional hazards regression models were used to estimate the association between weight change patterns and all-cause mortality in the total sample and among never smokers, adjusting for the covariates described above. There were 5846 deaths over a mean (SD) of 10.7 (7.2) years (288 590 person-years) of follow-up, or a rate of 20.3 deaths per 1000 person-years. The proportional hazards assumption was tested with Schoenfeld residuals,²² and no significant deviation from proportionality in hazards over time was detected.

We tested 2 hypotheses concerning weight loss using adjusted models with different reference categories. First, we investigated whether individuals who lost weight were at a reduced risk of death compared with those who remained overweight or obese. To test this risk reduction hypothesis, we estimated the hazards for the overweight-normal group compared with the overweight-overweight group and the obese-overweight group relative to the obese-obese group. Second, we investigated whether individuals with weight loss were at increased risk relative to those who maintained lower

weight over time to examine whether there is residual risk associated with having previously been heavier. To test this residual risk hypothesis, we compared the mortality risk for the obese-overweight group with the overweight-overweight group and the overweight-normal group with the normal-normal group.

Consistent with a prior study,²³ we estimated the proportion of early deaths attributable to obesity progression under 4 hypothetical scenarios using the following equation²⁴ for the population-attributable fraction (PAF): $\sum pd_i [(HR_i - 1)/HR_i]$, where pd_i is the proportion of total incident deaths observed in the i^{th} obesity progression category and HR_i is the hazard ratio (HR) associated with that category. The PAFs represent the proportion of early deaths that would not have occurred if members of that weight change category were redistributed to another lower risk category, assuming that the observed associations represent causal effects. Confidence intervals for PAFs were calculated using the delta method for complex survey design, accounting for multiple sources of uncertainty.²⁴

Secondary Analyses

In secondary analyses, we stratified our Cox proportional hazards regression models by sex and baseline age (<65 and ≥ 65 years) to examine effect modification. Next, we repeated the survival analyses in a second observation interval from 10 years before baseline (midlife: mean age, 44 years; interquartile range, 37-55) to baseline (mean age, 55 years; interquartile range, 47-65). We also tested the mortality risk reduction and residual risk hypotheses for weight change patterns that occurred during the second observation interval.

Stata, version 14 (StataCorp LLC) was used for data management and analyses. All estimates were adjusted for complex survey design, including NHANES examination sample weights, primary sampling unit, and strata. The PAFs were calculated using the Stata package `punafcc`.²⁴ Statistical significance was determined by a 2-sided P value <.05.

Results

Descriptive statistics for the participants are reported in **Table 1**. With weighted percentages shown, of the 24 205 participants, 11 617 were women (49.0%) and 12 588 were men (51.0%). At baseline, the mean (SD) age of the participants was 54.2 (9.6) years. The mean (SD) recalled BMI was 23.7 (4.1) at age 25 years and 27.2 (5.7) at 10 years before baseline. The mean (SD) BMI was 29.0 (6.1) at baseline. The proportions of race/ethnicity were 76.9% for non-Hispanic White, 10.0% for non-Hispanic Black, and 13.1% for Hispanic and other non-Hispanic individuals. Overall, 10 787 of the sample (55.7%) reported having more than a high school education at baseline, and 19 167 individuals (87.6%) were born in the US.

With respect to weight change patterns between age 25 years (early adulthood) and 10 years before baseline (midlife), 56.2% of the respondents maintained their BMI categories. The proportions of the population who maintained body weight were 38.5% at normal weight, 12.1% at overweight, and 5.6% at obese levels. Weight loss was rare in the study population. Only 1.3% of the individuals who were overweight at age 25 years lost weight to a normal BMI 10 years before baseline, 0.8% lost weight from obese to overweight, and 0.2% lost weight from obese to normal.

The **Figure** and **Figure 2** in the **Supplement** show the adjusted cumulative hazard curves of all-cause mortality for weight change patterns for all individuals and for never smokers. The adjusted HRs for each weight change pattern are presented in **Table 2**. For all participants, maintaining an obese BMI from early adulthood to midlife increased the risk of all-cause mortality compared with stable normal weight, with an HR of 2.17 (95% CI, 1.85-2.53). While weight gain from a normal to overweight BMI was not associated with risk, normal-obese (HR, 1.32; 95% CI, 1.15-1.52) and overweight-obese (HR, 1.47; 95% CI, 1.28-1.69) weight changes were associated with elevated mortality risks. Similar associations were observed among never smokers (normal-obese: HR, 1.37; 95% CI, 1.08-1.74; overweight-obese: HR, 1.75; 95% CI, 1.39-2.22).

With the risk reduction hypothesis, we found that adults who lost weight from obese to overweight by midlife had a 54% lower risk of all-cause mortality (HR, 0.46; 95% CI, 0.27-0.77) compared with adults who were stable obese (Table 3). Adults who lost weight from overweight in early adulthood to normal weight by midlife did not have reduced mortality risk (HR, 1.12; 95% CI, 0.86-1.45). Associations were similar in never smokers.

In the residual risk hypothesis, higher mortality was observed for adults with normal weight at midlife who were previously overweight in early adulthood (HR, 1.29; 95% CI, 1.02-1.64) compared with those who maintained stable normal weight. A significant residual risk was also found in never smokers who were previously overweight (HR, 1.58; 95% CI, 1.12-2.21). There was no significant residual risk for adults with overweight who were previously obese (HR, 0.86; 95% CI, 0.53-1.41). We also found no significant risk among never smokers.

Table 4 presents the PAFs calculated under 4 hypothetical population weight change scenarios. The first scenario describes the potential health implications of a treatment strategy in which adults who maintained an obese BMI instead lost weight to overweight by midlife. In this scenario, an estimated 3.2% (95% CI, 1.6%-4.9%) of early deaths could be averted. We also estimated that 12.4% (95% CI, 8.1%-16.5%) of early deaths could be avoided if the entire population with a BMI above normal weight instead had a normal BMI from age 25 years through midlife.

Table 1. Sample Characteristics by Weight Change Patterns From Age 25 Years to 10 Years Before Baseline, NHANES 1988-1994 and 1999-2014

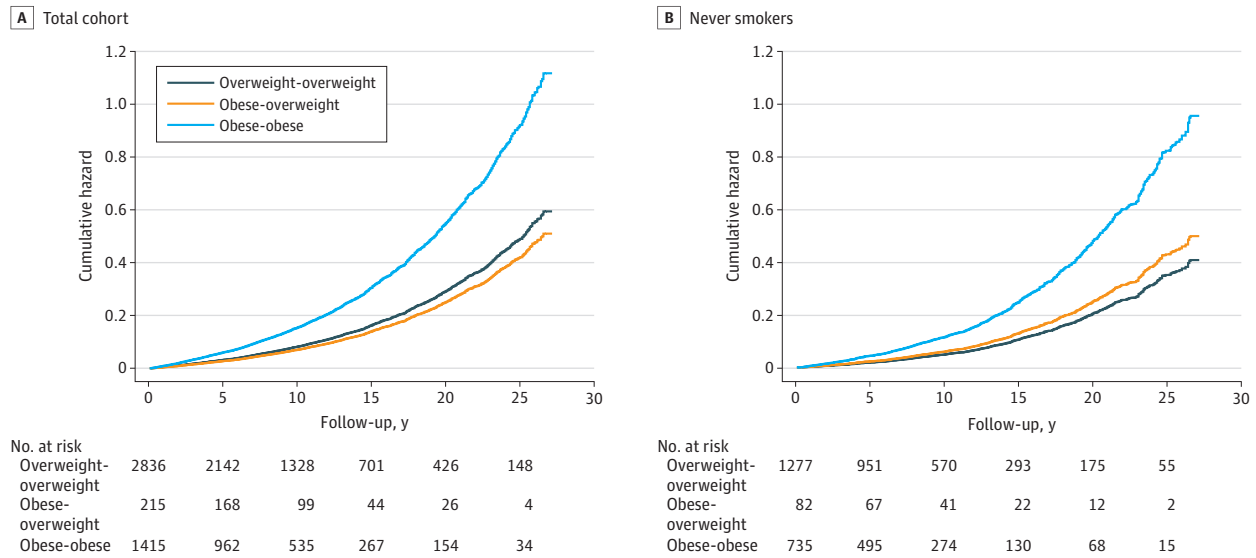
Characteristics ^a	Total	Weight change patterns, No. (%) ^b								
		Maintenance			Gain			Loss		
		Normal-normal	Overweight-overweight	Obese-obese	Normal-overweight	Normal-obese	Overweight-obese	Overweight-normal	Obese-Normal	Obese-overweight
No. (%)	24 205 (100)	8363 (38.5)	2811 (12.1)	1405 (5.6)	6329 (24.1)	2279 (7.9)	2394 (9.4)	351 (1.3)	59 (0.2)	214 (0.8)
Age, mean (SD), y	54.2 (9.6)	52.5 (9.4)	52.0 (9.2)	51.1 (8.8)	56.6 (9.6)	59.0 (9.0)	54.6 (9.3)	54.1 (9.4)	51.4 (9.5)	53.1 (9.6)
Sex										
Female	11 617 (49.0)	4808 (61.4)	634 (19.6)	676 (45.1)	2960 (47.0)	1417 (65.3)	887 (33.7)	129 (37.6)	32 (55.4)	74 (32.2)
Male	12 588 (51.0)	3555 (38.6)	2177 (80.4)	729 (54.9)	3369 (53.0)	862 (34.7)	1507 (66.3)	222 (62.4)	27 (44.6)	140 (67.9)
Race/ethnicity										
Non-Hispanic										
White	11 567 (76.9)	4268 (78.2)	1349 (78.2)	625 (74.2)	2934 (75.8)	994 (75.7)	1120 (76.4)	146 (72.8)	26 (71.7)	105 (77.8)
Black	5619 (10.0)	1766 (8.5)	661 (10.0)	451 (15.2)	1367 (9.7)	587 (12.2)	631 (11.3)	97 (12.3)	16 (14.6)	43 (9.8)
Hispanic and non-Hispanic other	7019 (13.1)	2329 (13.2)	801 (11.9)	329 (10.6)	2028 (14.5)	698 (12.1)	643 (12.3)	108 (15.0)	17 (13.7)	66 (12.4)
Education										
<High school	6144 (14.9)	1809 (12.8)	719 (13.8)	370 (15.8)	1690 (16.4)	738 (19.0)	609 (15.4)	115 (18.2)	16 (19.6)	78 (22.0)
High school	7274 (29.4)	2519 (28.2)	815 (28.6)	433 (31.8)	1889 (29.7)	689 (32.0)	739 (30.7)	115 (31.6)	20 (29.2)	55 (26.9)
>High school	10 787 (55.7)	4035 (57.6)	1277 (57.6)	602 (52.5)	2750 (53.9)	852 (49.0)	1046 (53.9)	121 (50.3)	23 (51.2)	81 (51.1)
Country of birth										
US	19 167 (87.6)	6469 (85.7)	2235 (89.3)	1253 (93.9)	4850 (85.7)	1843 (90.6)	2025 (90.9)	273 (86.9)	49 (86.4)	170 (91.8)
Other	5038 (12.4)	1894 (14.3)	576 (10.7)	152 (6.1)	1479 (14.3)	436 (9.4)	369 (9.1)	78 (13.1)	10 (13.6)	44 (8.2)
Smoking status										
Never	11 635 (49.0)	3956 (48.5)	1270 (47.0)	731 (53.5)	3124 (49.9)	1174 (52.9)	1150 (47.1)	135 (43.6)	13 (22.8)	82 (41.4)
Former	7212 (29.9)	2232 (27.5)	828 (29.9)	359 (26.9)	2049 (32.4)	753 (32.5)	792 (32.7)	97 (27.5)	23 (47.7)	79 (32.0)
Current	5358 (21.1)	2175 (24.0)	713 (23.1)	315 (19.6)	1156 (17.8)	352 (14.7)	452 (20.1)	119 (28.9)	23 (29.3)	53 (26.7)
BMI, mean (SD)										
At age 25 y	23.7 (4.1)	21.2 (1.6)	26.4 (1.2)	34.6 (4.9)	22.4 (1.7)	22.6 (1.6)	27.3 (1.4)	26.4 (1.3)	34.4 (5.7)	33.1 (3.7)
10 y prior to baseline	27.2 (5.7)	22.6 (1.6)	27.7 (1.4)	38.6 (7.4)	27.0 (1.4)	33.8 (4.4)	34.1 (4.3)	23.4 (1.3)	23.2 (1.5)	27.9 (1.4)
At baseline	29.0 (6.1)	24.9 (3.6)	29.7 (4.1)	38.7 (7.8)	29.2 (4.0)	34.1 (5.5)	34.7 (5.4)	25.9 (4.5)	29.4 (7.8)	30.7 (6.2)
BMI change, mean (SD)	3.5 (4.3)	1.4 (1.6)	1.2 (1.6)	4.0 (6.3)	4.5 (2.1)	11.3 (4.6)	6.8 (4.4)	-3.0 (1.9)	-11.2 (6.0)	-5.2 (3.9)

Abbreviation: BMI, body mass index (calculated as weight in kilograms divided by height in meters squared); NHANES, National Health and Nutrition Examination Survey. ^b Weight change patterns are defined in eTable 1 in the Supplement.

^a Unweighted frequencies and weighted means/percentages are presented.

In secondary analyses, we found that stable obesity from 10 years before baseline to baseline increased the risk of all-cause mortality, with HRs of 1.54 (95% CI, 1.37-1.73) compared with stable normal weight (eTable 2 in the Supplement). There was no evidence of risk reduction for adults who lost weight from obese to overweight or overweight to normal weight. We found that adults who lost weight from obese to overweight experienced residual risk (HR, 1.64; 95% CI, 1.38-1.95) along with adults who lost weight from overweight to normal weight (HR, 1.44; 95% CI, 1.19-1.75) (eTable 3 in the Supplement).

Figure. Adjusted Cumulative Hazard Curves of All-Cause Mortality for Selected Weight Change Patterns From Early Adulthood to Midlife



Patterns shown for total cohort (A) and never smokers (B).

Table 2. Adjusted Hazard Ratios of All-Cause Mortality for Weight Change Patterns From Young Adulthood to Midlife

Characteristic	Weight change patterns							
	Maintenance			Gain			Loss ^a	
	Normal-normal	Overweight-overweight	Obese-obese	Normal-overweight	Normal-obese	Overweight-obese	Overweight-normal	Obese-overweight
Full sample								
No. of events	1631	592	322	1375	544	531	119	64
Events/1000 py	16.4	19.6	24.8	20.1	25.4	23.0	28.6	28.9
Age-adjusted HR (95% CI) ^b	1 [Reference]	1.31 (1.17-1.46)	2.20 (1.88-2.57)	1.07 (0.98-1.17)	1.25 (1.09-1.44)	1.56 (1.37-1.78)	1.56 (1.22-1.99)	1.19 (0.78-1.80)
Multivariable adjusted HR (95% CI) ^c	1 [Reference]	1.15 (1.02-1.31)	2.17 (1.85-2.53)	1.05 (0.97-1.15)	1.32 (1.15-1.52)	1.47 (1.28-1.69)	1.29 (1.02-1.64)	1.00 (0.62-1.60)
Never smokers								
No. of events	453	169	130	486	218	195	28	19
Events/1000 py	9.8	12.8	19.6	14.6	19.1	17.7	17.4	20.7
Age-adjusted HR (95% CI) ^b	1 [Reference]	1.37 (1.06-1.76)	3.29 (2.55-4.23)	1.24 (1.04-1.46)	1.47 (1.17-1.86)	1.98 (1.56-2.50)	1.62 (1.11-2.35)	1.39 (0.71-2.70)
Multivariable adjusted HR (95% CI) ^c	1 [Reference]	1.20 (0.93-1.56)	2.82 (2.16-3.67)	1.16 (0.98-1.37)	1.37 (1.08-1.74)	1.75 (1.39-2.22)	1.58 (1.13-2.21)	1.46 (0.81-2.65)

Abbreviations: HR, hazard ratio; py, person-years.

^a Results for weight loss pattern obese-normal were suppressed because of few incident events (<10).

^b Age at baseline (continuous).

^c Adjusted for age at baseline (years), sex (male, female), race/ethnicity (non-Hispanic White, non-Hispanic Black, Hispanic, and non-Hispanic other), educational level (less

than high school, high school or equivalent, and college and above), nativity (US born, non-US born), smoking status (never, former, and current), and survey year (continuous).

Stratified analyses by baseline age and sex are shown in eFigure 3 in the Supplement. We found significant interactions between weight change categories and baseline age, but not between weight change and sex. For the weight gain and stable obese categories, the associations appeared to be stronger among participants who were younger than 65 years at baseline compared with those 65 years or older.

Discussion

This nationally representative study of US adults revealed significant associations between patterns of BMI change across the life course and risks of all-cause mortality. From early to middle adulthood, the lowest mortality risk was observed among individuals who entered adulthood with a normal BMI and maintained a BMI within the normal range through middle adulthood. Individuals who lost or gained weight over this interval were at intermediate risk, whereas individuals who maintained BMI in the obese range were at the highest risk.

While these results are broadly consistent with a recent study by Chen et al¹² that used NHANES data, we tested 2 different hypotheses concerning weight loss. First, we found evidence in support of a risk reduction hypothesis. Weight loss from obese to overweight in individuals between early and middle adulthood was associated with more than a 50% reduction in mortality risk relative to those who remained obese throughout the period. In contrast, the same weight loss pattern in a later weight change interval was not associated with risk reduction. The discrepancy likely reflects the different nature of weight loss at an earlier vs later life course. Weight loss at an older age is often unintentional, associated with underlying health conditions and/or age-related loss of muscle mass,²⁵ whereas weight loss earlier in life tends to capture changes in fat mass and is less likely to be affected by the onset of chronic diseases.⁹ The 10-year period between the earlier weight change interval and baseline may have also minimized a reverse association (ie, the influence of disease on

Table 3. Adjusted Hazard Ratios of All-Cause Mortality for Risk Reduction and Residual Risk Hypotheses

Hypothesis	HR (95% CI) ^a	
	Full sample	Never smokers
Risk reduction		
Obese-overweight	0.46 (0.27-0.77)	0.52 (0.28-0.97)
Obese-obese	1 [Reference]	1 [Reference]
Overweight-normal	1.12 (0.86-1.45)	1.31 (0.90-1.92)
Overweight-overweight	1 [Reference]	1 [Reference]
Residual risk		
Obese-overweight	0.86 (0.53-1.41)	1.22 (0.65-2.30)
Overweight-overweight	1 [Reference]	1 [Reference]
Overweight-normal	1.29 (1.02-1.64)	1.58 (1.12-2.21)
Normal-normal	1 [Reference]	1 [Reference]

Abbreviation: HR, hazard ratio.

^a Adjusted for age at baseline (years), sex (male and female), race/ethnicity (non-Hispanic White, non-Hispanic Black, Hispanic, and non-Hispanic other), educational level (less than high school, high school or equivalent, and college and above), nativity (US born, non-US born), smoking status (never, former, and current), and survey year (continuous).

Table 4. PAFs for Population Counterfactuals

Population counterfactuals	Definition	PAF %, (95% CI) ^a
Weight loss	If those who maintained an obese BMI lost weight to an overweight BMI at midlife	3.2 (1.6-4.9)
Weight maintenance-overweight	If those who gained weight from overweight to obese instead remained overweight between age 25 y and midlife	2.3 (0.7-3.8)
Weight maintenance-normal	If those who gained weight from normal to obese instead remained normal between age 25 y and midlife	2.2 (1.0-3.3)
Comprehensive prevention	If the total population had a normal BMI from age 25 y through midlife	12.4 (8.1-16.5)

Abbreviations: BMI, body mass index (calculated as weight in kilograms divided by height in meters squared); PAF, population-attributable fraction.

^a PAFs and related 95% CIs were calculated by the Stata punafcc package using the formula $\sum pd_i [(HR_i - 1)/HR_i]$, where pd_i is the proportion of total incident deaths observed in the i^{th} obesity progression category and HR_i is the hazard ratio (HR)

associated with that category. PAFs were calculated using pd_i and HR_i , estimated from the entire sample. All HR_i values were generated from Cox proportional hazards regression models adjusted for covariates (age at baseline, sex, race/ethnicity, educational level, nativity, and survey cycles) and postestimation analyses.

body weight), as one study indicated that weight loss accelerated an average of 9 years before death.²⁶

The reduction in risk associated with weight loss from early to middle adulthood is contradictory to most previous observational studies, which showed an increased risk of death^{11,14,16,27} or no reduction in risk.⁹ The inconsistency may be a result of the period of the life course examined and/or incomplete adjustment for reverse associations in previous study designs. To evaluate mortality risks associated with weight loss and gain, studies often use stable weight as the reference category. Such a practice can obscure interpretation because stable weight may be maintained at different BMI levels with different risk implications.

The present study tested another hypothesis related to whether the imprint of early life obesity on mortality risk persists into midlife among those who lose weight. Compared with individuals who remained overweight between age 25 years and midlife, we did not observe higher risks of mortality in those who lost weight from obese to overweight. While small sample sizes prevented us from producing a precise estimate for this weight change pattern, such a finding would seem to suggest that the physiologic effects of early life obesity may be at least partially reversible. The finding that obesity limited to early or middle adulthood is associated with a lower mortality risk relative to persistent obesity but with a higher or comparable risk relative to stable normal weight is consistent with a life course perspective²⁸ and empirical evidence.^{29,30}

When extrapolated to the population level, we found that 3.2% of early deaths may be attributable to maintaining weight in the stable obese range vs losing weight to an overweight BMI by midlife. These results indicate an opportunity to improve population health through enhanced targeting of evidence-based obesity treatments, including aggressive behavioral, lifestyle counseling, or other modalities, to young adults with obesity. In total, we estimated that 12.4% of early deaths were attributable to having weight in excess of the normal BMI range at any point between early and mid-adulthood.

Limitations

The present study had several limitations. First, to reconstruct weight change between early and midlife, we relied on recalled weight at age 25 years and 10 years before baseline. Despite validation studies that suggested a relatively strong concordance between recalled weight data and contemporaneous weight measures across a number of different populations and recall periods,³¹⁻³³ some misclassification has likely occurred.^{34,35} A future analysis of weight loss and mortality risk could benefit from using a data source, such as the Framingham Heart Study, that has repeated objective measures of BMI over time. A second limitation is that we could not adjust for physical activity or diet in early adulthood because recall data on these variables were not collected. Third, the proportion of the sample that lost weight between early and midlife was small, limiting the precision of our estimates. Fourth, we had no data on the mechanism of weight change and whether it was intentional or unintentional; however, conditioning our analysis on 10-year survival after the midlife weight observation may reduce the likelihood of unintentional weight loss affecting the associations.³⁶

Conclusions

In this nationally representative study of US adults, compared with remaining obese, weight loss from an obese BMI in early adulthood to an overweight BMI in midlife was associated with more than a 50% reduction in the subsequent risk of early death. At the population level, we estimated that weight loss from obese to overweight would prevent more than 3% of premature deaths, and preventing weight gain from normal weight could prevent more than 12% of premature deaths. Our findings support the importance of population-based approaches to preventing weight gain across the life course and a need for greater emphasis on treating obesity early in life.

ARTICLE INFORMATION

Accepted for Publication: May 18, 2020.

Published: August 14, 2020. doi:10.1001/jamanetworkopen.2020.13448

Open Access: This is an open access article distributed under the terms of the [CC-BY-NC-ND License](#). © 2020 Xie W et al. *JAMA Network Open*.

Corresponding Author: Andrew C. Stokes, PhD, Boston University School of Public Health, 801 Massachusetts Ave, Third Floor, 362, Boston, MA 02118 (acstokes@bu.edu).

Author Affiliations: Department of Global Health, Boston University School of Public Health, Boston, Massachusetts (Xie, Lundberg, Stokes); University of North Carolina Gillings School of Public Health, Chapel Hill (Collins); Epidemiology, Medical Devices, Johnson & Johnson Inc, New Brunswick, New Jersey (Johnston); Ethicon Inc, Cincinnati, Ohio (Waggoner, Hsiao); Population Studies Center, University of Pennsylvania, Philadelphia (Preston); Department of Medicine, Brigham and Women's Hospital, Harvard Medical School, Boston, Massachusetts (Manson); Department of Epidemiology, Harvard T. H. Chan School of Public Health, Boston, Massachusetts (Manson).

Author Contributions: Drs Xie and Stokes had full access to all of the data in the study and take responsibility for the integrity of the data and the accuracy of the data analysis.

Concept and design: Xie, Collins, Johnston, Waggoner, Hsiao, Preston, Manson, Stokes.

Acquisition, analysis, or interpretation of data: Xie, Lundberg, Johnston, Waggoner, Hsiao, Manson, Stokes.

Drafting of the manuscript: Xie, Lundberg, Preston, Stokes.

Critical revision of the manuscript for important intellectual content: Xie, Lundberg, Collins, Johnston, Waggoner, Hsiao, Manson, Stokes.

Statistical analysis: Xie, Preston, Stokes.

Obtained funding: Stokes.

Administrative, technical, or material support: Xie, Hsiao, Manson.

Supervision: Johnston, Hsiao, Manson, Stokes.

Conflict of Interest Disclosures: Dr Johnston reported being an employee of Johnson & Johnson Company and stockholder during the conduct of the study. Dr Waggoner reported being an employee of Ethicon Inc (a Johnson & Johnson Company) and a stockholder of Johnson & Johnson during the conduct of the study. Ms Hsiao reported being an employee of Ethicon Inc during the conduct of the study. Dr Stokes reported receiving grants from Ethicon Inc during the conduct of the study. No other disclosures were reported.

Funding/Support: This study was supported by Ethicon Inc.

Role of the Funder/Sponsor: Ethicon Inc had no role in the design and conduct of the study; collection, management, analysis, and interpretation of the data; preparation, review, or approval of the manuscript; and decision to submit the manuscript for publication.

Additional Contributions: Annie Lied-Lied, MSC, MPH, and Ishita Doshi, MPH (Ethicon Inc), provided comments on the manuscript; they did not receive compensation outside of salary.

REFERENCES

1. Flegal KM, Carroll MD, Ogden CL, Curtin LR. Prevalence and trends in obesity among US adults, 1999-2008. *JAMA*. 2010;303(3):235-241. doi:10.1001/jama.2009.2014
2. NCD Risk Factor Collaboration (NCD-RisC). Trends in adult body-mass index in 200 countries from 1975 to 2014: a pooled analysis of 1698 population-based measurement studies with 19.2 million participants. *Lancet*. 2016;387(10026):1377-1396. doi:10.1016/S0140-6736(16)30054-X
3. Lee JM, Pilli S, Gebremariam A, et al. Getting heavier, younger: trajectories of obesity over the life course. *Int J Obes (Lond)*. 2010;34(4):614-623. doi:10.1038/ijo.2009.235
4. Aune D, Sen A, Prasad M, et al. BMI and all cause mortality: systematic review and non-linear dose-response meta-analysis of 230 cohort studies with 3.74 million deaths among 30.3 million participants. *BMJ*. 2016; 353:i2156. doi:10.1136/bmj.i2156
5. Cohen SS, Signorello LB, Cope EL, et al. Obesity and all-cause mortality among black adults and white adults. *Am J Epidemiol*. 2012;176(5):431-442. doi:10.1093/aje/kws032
6. Flegal KM, Graubard BI, Williamson DF, Gail MH. Excess deaths associated with underweight, overweight, and obesity. *JAMA*. 2005;293(15):1861-1867. doi:10.1001/jama.293.15.1861

7. Whitlock G, Lewington S, Sherliker P, et al; Prospective Studies Collaboration. Body-mass index and cause-specific mortality in 900 000 adults: collaborative analyses of 57 prospective studies. *Lancet*. 2009;373(9669):1083-1096. doi:10.1016/S0140-6736(09)60318-4
8. Afshin A, Forouzanfar MH, Reitsma MB, et al; GBD 2015 Obesity Collaborators. Health effects of overweight and obesity in 195 countries over 25 years. *N Engl J Med*. 2017;377(1):13-27. doi:10.1056/NEJMoa1614362
9. Zheng Y, Manson JE, Yuan C, et al. Associations of weight gain from early to middle adulthood with major health outcomes later in life. *JAMA*. 2017;318(3):255-269. doi:10.1001/jama.2017.7092
10. Shimazu T, Kuriyama S, Ohmori-Matsuda K, Kikuchi N, Nakaya N, Tsuji I. Increase in body mass index category since age 20 years and all-cause mortality: a prospective cohort study (the Ohsaki Study). *Int J Obes (Lond)*. 2009;33(4):490-496. doi:10.1038/ijo.2009.29
11. Adams KF, Leitzmann MF, Ballard-Barbash R, et al. Body mass and weight change in adults in relation to mortality risk. *Am J Epidemiol*. 2014;179(2):135-144. doi:10.1093/aje/kwt254
12. Chen C, Ye Y, Zhang Y, Pan X-F, Pan A. Weight change across adulthood in relation to all cause and cause specific mortality: prospective cohort study. *BMJ*. 2019;367:l5584. doi:10.1136/bmj.l5584
13. Goldstein DJ. Beneficial health effects of modest weight loss. *Int J Obes Relat Metab Disord*. 1992;16(6):397-415.
14. Corrada MM, Kawas CH, Mozaffar F, Paganini-Hill A. Association of body mass index and weight change with all-cause mortality in the elderly. *Am J Epidemiol*. 2006;163(10):938-949. doi:10.1093/aje/kwj114
15. Pamuk ER, Williamson DF, Serdula MK, Madans J, Byers TE. Weight loss and subsequent death in a cohort of U.S. adults. *Ann Intern Med*. 1993;119(7, pt 2):744-748. doi:10.7326/0003-4819-119-7_Part_2-199310011-00023
16. Hirko KA, Kantor ED, Cohen SS, Blot WJ, Stampfer MJ, Signorello LB. Body mass index in young adulthood, obesity trajectory, and premature mortality. *Am J Epidemiol*. 2015;182(5):441-450. doi:10.1093/aje/kwv084
17. Lee I-M, Paffenbarger RS Jr. Is weight loss hazardous? *Nutr Rev*. 1996;54(4, pt 2):S116-S124. doi:10.1111/j.1753-4887.1996.tb03906.x
18. Peeters A, Barendregt JJ, Willekens F, Mackenbach JP, Al Mamun A, Bonneux L; NEDCOM, the Netherlands Epidemiology and Demography Compression of Morbidity Research Group. Obesity in adulthood and its consequences for life expectancy: a life-table analysis. *Ann Intern Med*. 2003;138(1):24-32. doi:10.7326/0003-4819-138-1-200301070-00008
19. Stokes A, Preston SH. How dangerous is obesity? issues in measurement and interpretation. *Popul Dev Rev*. 2016;42(4):595-614. doi:10.1111/padr.12015
20. National Center for Health Statistics. The linkage of National Center for Health Statistics survey data to the National Death Index—2015 Linked Mortality File (LMF): methodology overview and analytic considerations. Updated April 11, 2019. Accessed March 22, 2019. https://www.cdc.gov/nchs/data/datalinkage/LMF2015_Methodology_Analytic_Considerations.pdf
21. World Health Organization. Obesity. Accessed November 25, 2019. <https://www.who.int/topics/obesity/en/>
22. Schoenfeld D. Partial residuals for the proportional hazards regression model. *Biometrika*. 1982;69(1):239-241. doi:10.1093/biomet/69.1.239
23. Stokes A, Collins JM, Grant BF, et al. Obesity progression between young adulthood and midlife and incident diabetes: a retrospective cohort study of US adults. *Diabetes Care*. 2018;41(5):1025-1031. doi:10.2337/dc17-2336
24. Newson RB. Attributable and unattributable risks and fractions and other scenario comparisons. *The Stata Journal*. 2013;13(4):672-98. doi:10.1177/1536867X1301300402
25. Nilsson PM, Nilsson J-Å, Hedblad B, Berglund G, Lindgärde F. The enigma of increased non-cancer mortality after weight loss in healthy men who are overweight or obese. *J Intern Med*. 2002;252(1):70-78. doi:10.1046/j.1365-2796.2002.01010.x
26. Alley DE, Metter EJ, Griswold ME, et al. Changes in weight at the end of life: characterizing weight loss by time to death in a cohort study of older men. *Am J Epidemiol*. 2010;172(5):558-565. doi:10.1093/aje/kwq168
27. Myrskylä M, Chang VW. Weight change, initial BMI, and mortality among middle- and older-aged adults. *Epidemiology*. 2009;20(6):840-848. doi:10.1097/EDE.0b013e3181b5f520
28. Kuh D, Ben-Shlomo Y, Lynch J, Hallqvist J, Power C. Life course epidemiology. *J Epidemiol Community Health*. 2003;57(10):778-783. doi:10.1136/jech.57.10.778
29. Abdullah A, Wolfe R, Stoelwinder JU, et al. The number of years lived with obesity and the risk of all-cause and cause-specific mortality. *Int J Epidemiol*. 2011;40(4):985-996. doi:10.1093/ije/dyr018
30. Everhart JE, Pettitt DJ, Bennett PH, Knowler WC. Duration of obesity increases the incidence of NIDDM. *Diabetes*. 1992;41(2):235-240. doi:10.2337/diab.41.2.235

31. Stokes A, Ni Y. Validating a summary measure of weight history for modeling the health consequences of obesity. *Ann Epidemiol*. 2016;26(12):821-826.e2. doi:10.1016/j.annepidem.2016.10.005
32. Casey VA, Dwyer JT, Berkey CS, Coleman KA, Gardner J, Valadian I. Long-term memory of body weight and past weight satisfaction: a longitudinal follow-up study. *Am J Clin Nutr*. 1991;53(6):1493-1498. doi:10.1093/ajcn/53.6.1493
33. Perry GS, Byers TE, Mokdad AH, Serdula MK, Williamson DF. The validity of self-reports of past body weights by US adults. *Epidemiology*. 1995;6(1):61-66. doi:10.1097/00001648-199501000-00012
34. Norgan NG, Cameron N. The accuracy of body weight and height recall in middle-aged men. *Int J Obes Relat Metab Disord*. 2000;24(12):1695-1698. doi:10.1038/sj.ijo.0801463
35. Olivarius NF, Andreasen AH, Løken J. Accuracy of 1-, 5- and 10-year body weight recall given in a standard questionnaire. *Int J Obes Relat Metab Disord*. 1997;21(1):67-71. doi:10.1038/sj.ijo.0800365
36. Berrington de Gonzalez A, Hartge P, Cerhan JR, et al. Body-mass index and mortality among 1.46 million white adults. *N Engl J Med*. 2010;363(23):2211-2219. doi:10.1056/NEJMoa1000367

SUPPLEMENT.

eTable 1. Weight Change Categories from Young Adulthood to Midlife

eTable 2. Adjusted Hazard Ratios of All-cause Mortality for Weight Change Patterns from Midlife to Late Adulthood

eTable 3. Adjusted Hazard Ratios of All-cause Mortality for Risk Reduction and Residual Risk Hypotheses, Assessing Weight Change from Midlife to Late Adulthood

eFigure 1. Study Inclusion/Exclusion Criteria for Analytic Sample, NHANES 1988-1994 & 1999-2016

eFigure 2. Adjusted Cumulative Hazard Curves of All-cause Mortality for Selected Weight Change Patterns from Young Adulthood to Midlife

eFigure 3. Adjusted Hazard Ratios of All-cause Mortality for Weight Change Patterns across Adulthood by Baseline Age and Sex